

ARMOURCOAT™  
SURFACE FINISHES

POLISHED  
PLASTER  
TRAVERTINE  
PITTED  
DRAGGED



## Travertine

The Travertine finish has a light open texture and a directional quality similar to that of natural travertine stone. The surface has a low sheen, and although applied in just one colour appears to have two or three distinctly separate tones running through the surface. This finish can work well in colours across the spectrum as it is possible to achieve the subtle tonal contrasts in both light and dark colours.



Daniel Galvin, England. Design: Caulder Moore

## Pitted

The rugged, more grainy appearance of the Pitted finish combines with a less highly polished surface to create the appearance and feel of honed or lightly polished limestone. It is most effective when used to create the appearance of a monolithic stone surface or a natural stone block. The Pitted finish is seen to best effect in lighter or natural stone colours and can benefit greatly from acute downlighting to accentuate the slightly pitted nature of the surface.



Sun Life, England. Architects: SOM

## Dragged

Inspired by the patterning of weathered rock, the Dragged finish is another Armourcoat development – both in technique and specialist tools. Using the same basic ingredients as the Pitted finish, the rugged, grainy, yet semi-polished surface is characterised by striations of texture running through the surface to give a strong directional quality.



Dragged





Tea Trade Wharf, England. Architects: MCW Associates



Tate Britain, England. Architects: John Miller & Partners



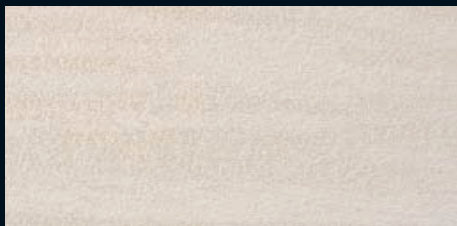
London Underground Staff Restaurant, England. Architects: Pringle Brandon



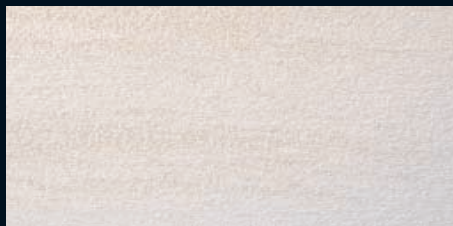
# Travertine Colour Palette



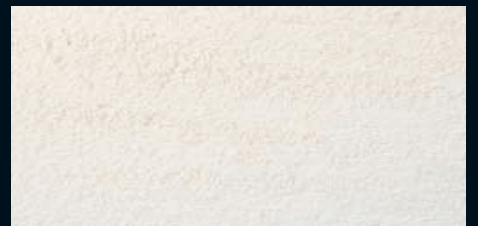
TR L0022



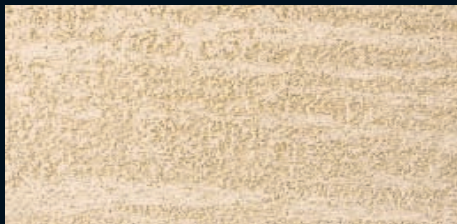
TR L0139



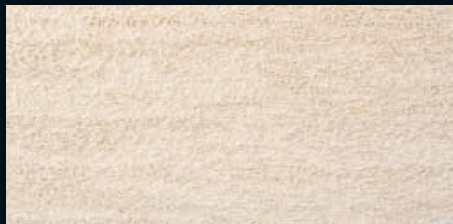
TR L0170



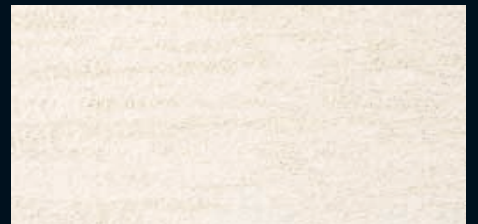
TR L0006



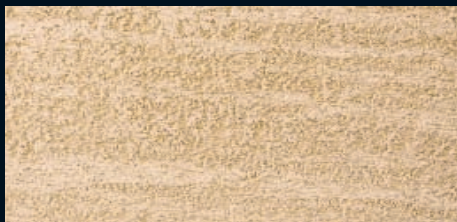
TR L4206



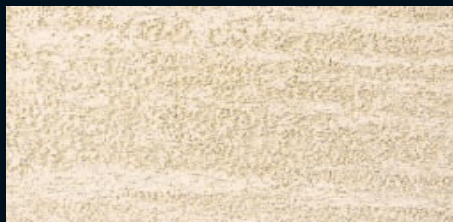
TR L4214



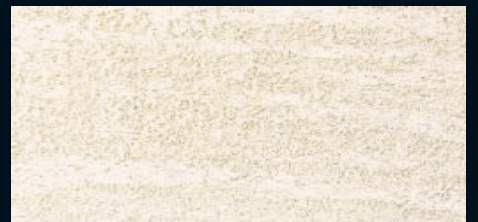
TR L0188



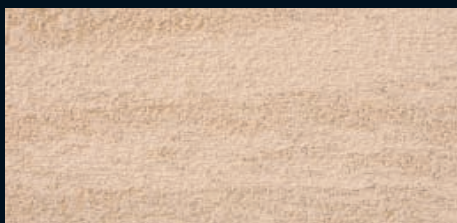
TR L0246



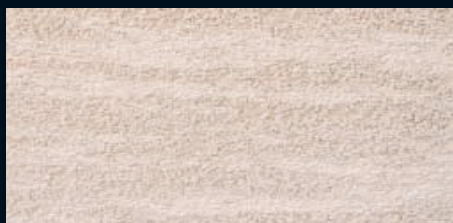
TR L0287



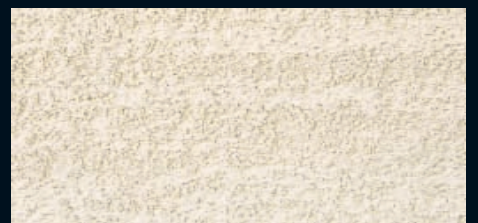
TR L6185



TR L0436



TR L4222



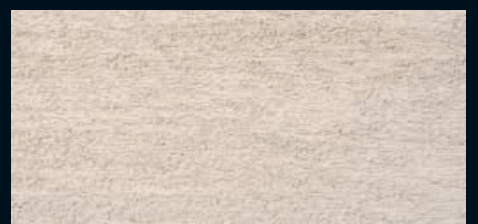
TR L0444



TR L0162



TR L0451



TR L8157

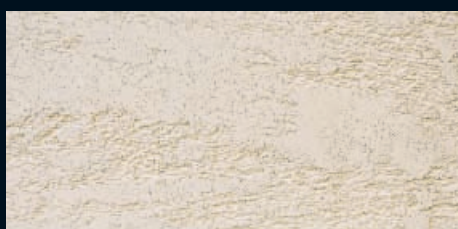
Colours and patterns illustrated are for guidance only. Due to print limitations, the exact pattern, colours and shades may vary from those shown. Please request a sample for accurate colour representation.



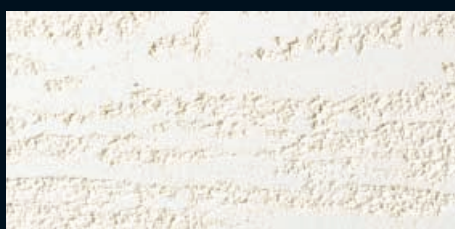
# Dragged Colour Palette



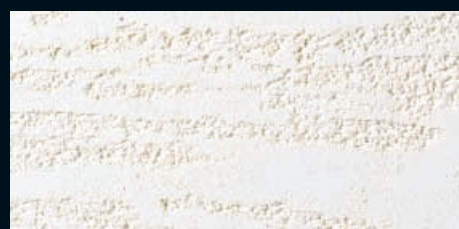
DR L0022



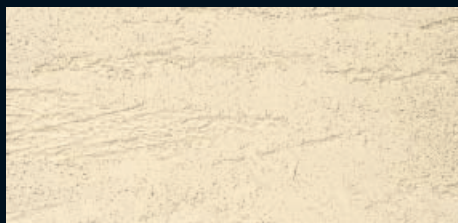
DR L0139



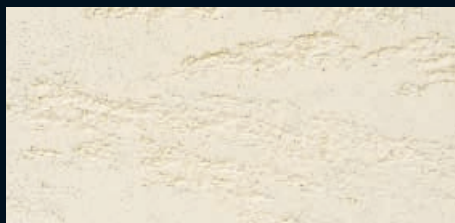
DR L0170



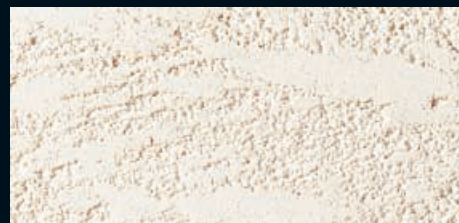
DR L0006



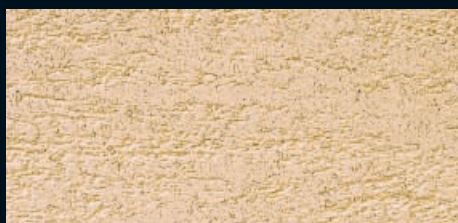
DR L4206



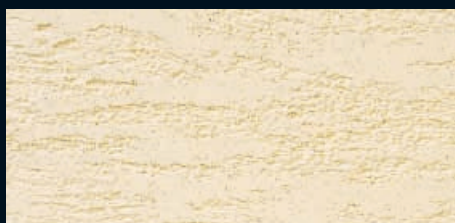
DR L4214



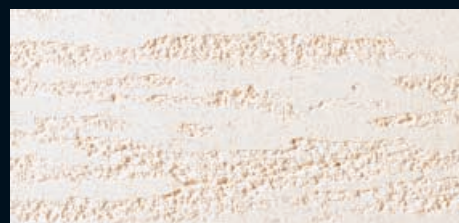
DR L0188



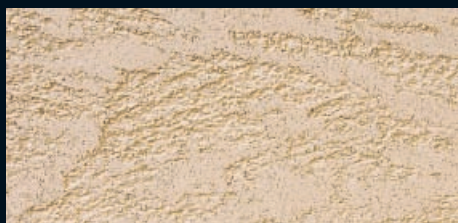
DR L0246



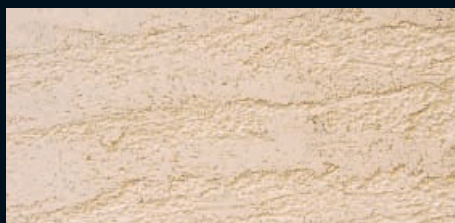
DR L0287



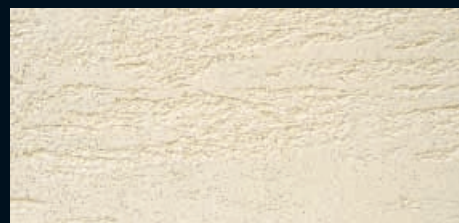
DR L6185



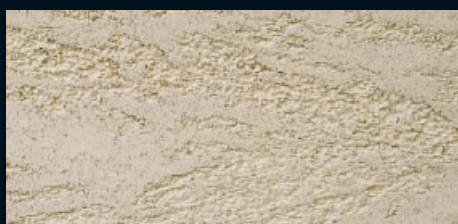
DR L0436



DR L4222



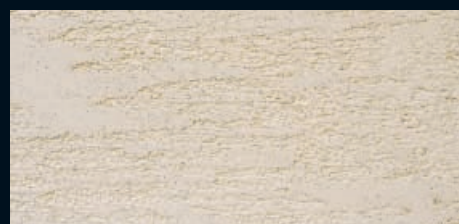
DR L0444



DR L0162



DR L0451



DR L8157

Colours and patterns illustrated are for guidance only. Due to print limitations, the exact pattern, colours and shades may vary from those shown. Please request a sample for accurate colour representation.



# Pitted Colour Palette



PT L0253



PT L0246



PT L0238



PT L0121



PT L0113



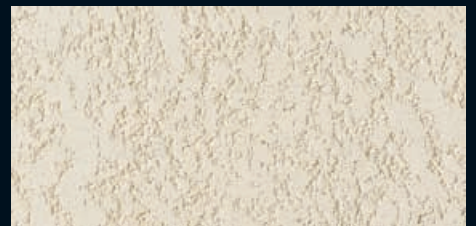
PT L0105



PT L0220



PT L0147



PT L0139



PT L0212



PT L0162



PT L0154



PT L8165



PT L8033



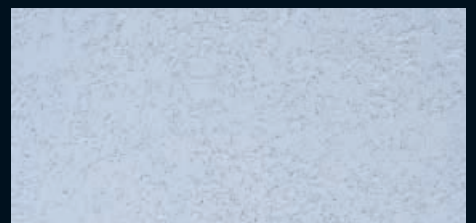
PT L8090



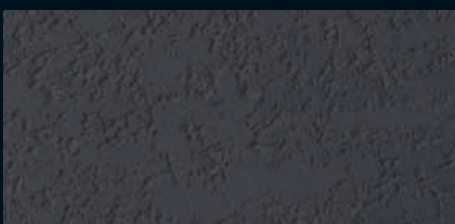
PT L2077



PT L2200



PT L2226



PT L0204



PT L0196



PT L0022

Colours and patterns illustrated are for guidance only. Due to print limitations, the exact pattern, colours and shades may vary from those shown. Please request a sample for accurate colour representation.



# Pitted Colour Palette



PT L0279



PT L0261



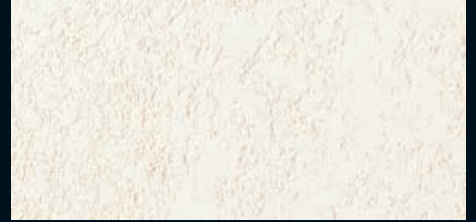
PT L0006



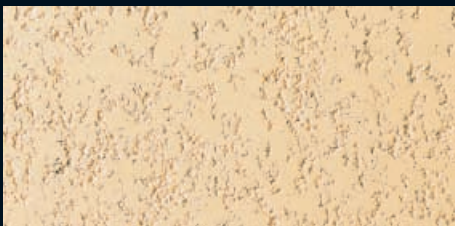
PT L0170



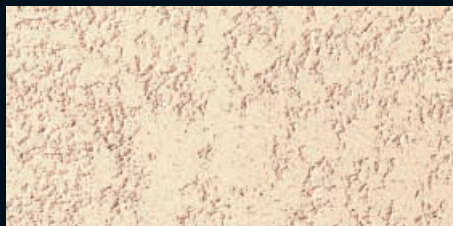
PT L6185



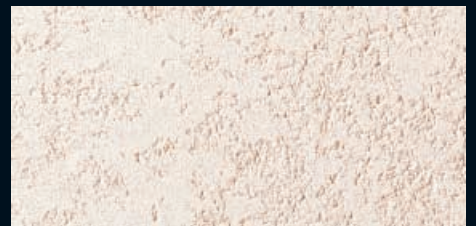
PT L0188



PT L4107



PT L4065



PT L4131



PT L4123



PT L4024



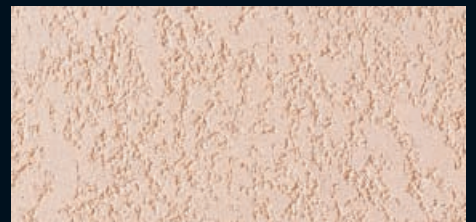
PT L4115



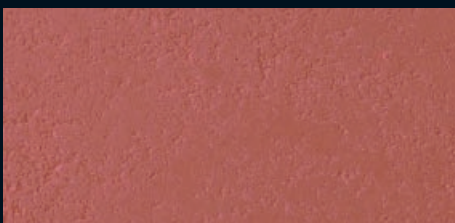
PT L6102



PT L6052



PT L6110



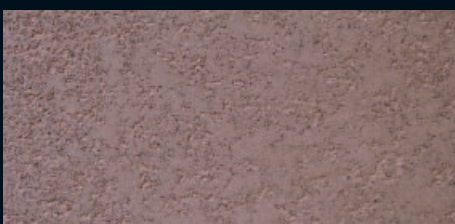
PT L6078



PT L6086



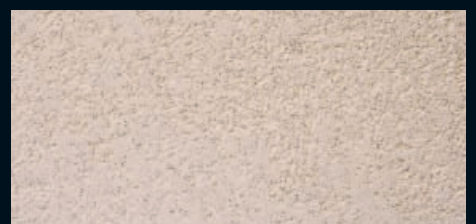
PT L 6144



PT L0469



PT L6284



PT L0477

Colours and patterns illustrated are for guidance only. Due to print limitations, the exact pattern, colours and shades may vary from those shown. Please request a sample for accurate colour representation.





**ARMOURCOAT™**  
SURFACE FINISHES

**For product specific brochures, further information, and the location of your nearest Armourcoat Surfaces Finishes agent, please see our website.**

Armourcoat Limited, Morewood Close, Sevenoaks, Kent TN13 2HU, United Kingdom  
Telephone: +44 (0)1732 460668 Fax: +44 (0)1732 450930 Email: [sales@armourcoat.co.uk](mailto:sales@armourcoat.co.uk)

**[www.armourcoat.com](http://www.armourcoat.com)**